



# Retreat inclusions



**Hotondo  
Homes**

HOTONDO HOMES

**FOREVER  
RETREAT**

*Forever part of your journey.*

A photograph of a woman with blonde hair in a ponytail, wearing a green and brown striped shirt, smiling as she interacts with two children in a kitchen. The children, a boy and a girl, are also smiling. They are standing at a kitchen counter with various items like a whisk, a bowl, and a cutting board. The background shows a modern kitchen with white cabinets and a brick-style backsplash. A dark blue text box is overlaid on the left side of the image.

# At Hotondo Homes, we believe your home is your retreat

The Retreat Range is the perfect choice for first home buyers who are after a home they can truly be proud of. With a beautiful selection of inclusions to add a touch of luxury and style, you'll have everything you could want in your first home.



## External Features

### Entrance Door

Selection of Corinthian 2040 x 820mm semi-gloss paint finish from Builder's Retreat Range

### Door Furniture

Lockwood Entrance Knob to all external doors with separate deadlock

### Brickwork

PGH or Selkirk bricks from Builder's Retreat Range with natural colour mortar (region specific)

### External Cladding

James Hardie lightweight cladding to external walls (design specific)

### Windows

Dowell aluminium sliding windows and doors (aluminium awning windows to some front facades)

### Door & Window Infill

James Hardie lightweight cladding above all windows and doors unless noted otherwise

### Roof Tiles

Boral concrete roof tiles from Boral Standard Range (region specific)

### Metal Roofing

Colorbond steel roofing from Colorbond Standard Range (region specific)

### Fascia & Gutter

Colorbond fascia and gutter from Colorbond Standard Range

## Connections

### Site Costs Allowance

650m<sup>2</sup> block up to 300mm fall

### Connection Allowance

Storm water, sewer, power and water connections

## Kitchen

### Oven

Omega 60cm stainless steel electric multi-function oven

### Cooktop

Omega 60cm four burner stainless steel gas or Omega 60cm electric ceramic cooktop

### Rangehood

Omega 50cm undermount rangehood

### Sink

Clark 1.5 end bowl left or right configuration with one tap hole

### Sink Mixer

Stylus pin sink mixer

### Dishwasher Provision

600mm space with cold water point

### Pantry

Built-in pantry with four white melamine shelves (design specific)

### Cabinetry

Laminex finish to all cabinetry (refer to internal drawings for layout)

### Benchtops

32mm thick benchtop from Laminex Standard Range

### Splashback

Ceramic wall tiling from Builder's Retreat Range

## Ceramic Tiling

### Floor and Wall Tiles

Kitchen and wet areas from Builder's Retreat Range

### Skirting Tiles

100mm high to wet areas from Builder's Retreat Range

## Internal Features

### Ceiling Heights

2400mm to all designs on both ground and upper levels where applicable

### Internal Doors

Selection of Corinthian 2040mm high doors from Builder's Retreat Range

### Door Furniture

Lockwood 63mm Velocity Series Rose Door Handles

### Plaster

CSR Gyprock plasterboard to all internal walls and ceilings

### Architrave

42mm x 12mm

### Skirting

67mm x 12mm

### Cornice

Cove style

## Paintwork

### External

Haymes exterior low sheen paint to timber and metal surfaces (2 coats)

### Internal Walls

Haymes low sheen wall finish paint (3 coats)

### Ceilings

Haymes ceiling paint finish including cornice (2 coats)

### Internal Woodwork & Doors

Haymes semi-gloss paint to timber doors, architrave sand skirtings (2 coats)

### External Garage Access Door

Haymes semi-gloss paint (2 coats)



## Bathroom, Ensuite, WC & Powder Room (if applicable)

### Mirrors

Mirror above each vanity to the width of the vanity

### Vanity Basin

Caroma semi recessed basin

### Basin Mixer

Stylus pin basin mixer

### Bath

Caroma 1525mm white acrylic bath (design specific)

### Bath Mixer Set

Stylus pin bath mixer and Stylus bath outlet (200mm)

### Shower Bases

Tiled or Decina moulded shower base (region specific)

### Shower Head

Stylus adjustable shower

### Shower Mixer

Stylus pin shower mixer

### Shower Screens

Clear laminated glazed pivot door

### Toilet

Stylus Close Couple toilet suite

### Toilet Roll Holder

Caroma metal toilet roll holder

### Towel Rail

Caroma metal double towel rail 600mm

## Laundry

### Laundry Trough

Clark 42 Litre Standard Tub and Cabinet with Floor and Single By-Pass

### Trough Mixer

Stylus pin sink mixer

### Washing Machine Taps

Stylus washing machine taps

### Splashback

Ceramic wall tiling from Builder's Retreat Range

## Insulation

### Ceilings

CSR Bradford Glasswool GOLD insulation batts (region specific)

### External Walls

CSR Bradford Glasswool GOLD insulation batts & EnviroSeal wall wrap (region specific)

## Garage

### Garage Door

B&D Colorbond Panel Lift Door with two remotes from Standard B&D Colour Range

### Internal Access Door

Selection of Corinthian 2040mm high door from Builder's Retreat Range (design specific)

### External Access Door

Corinthian 2040mm high weatherproof external access door (design specific)

## Heating

### Ducted Heating

3 star ducted heating unit with outlets to living areas and bedrooms (VIC only)

### Draft Exclusions

Draft seals to all external doors and garage internal access door

## Hot Water System

### Solar Hot Water System

Chromagen Solar Hot Water System with two panels and 20 litre gas or electric booster (VIC only)

### Hot Water System

Chromagen 20 litre gas continuous flow

\*Please note some designs may require alternative or additional hot water systems\*

## Electrical & Safety Devices

### Power Points

Clipsal Classic Series double power points (white) throughout  
Clipsal Classic Series single power point (white) to rangehood, refrigerator, dishwasher and microwave provisions (design specific)

### Smoke Alarms

Hard-wired Clipsal smoke alarms

### Ceiling Exhaust Fans

Clipsal self-closing exhaust fan to bathroom, ensuite and WC with non-openable windows (design specific)

### TV Point

1 x TV point

### Safety Switch

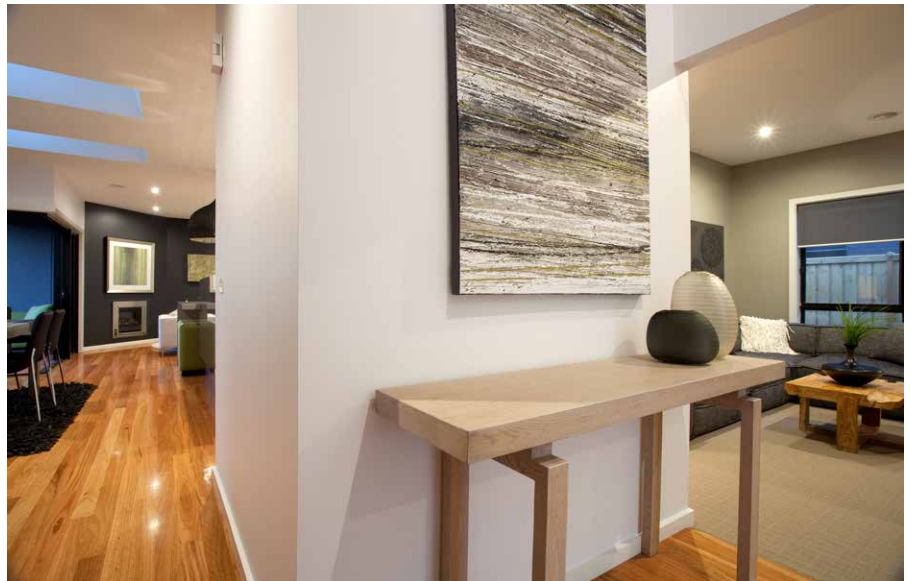
Clipsal Safety Switch to meter box

### Light Points

Clipsal white batten holder

### Phone Point

1 x Pre-wired telephone point



## Storage

### Robes

Corinthian 2040mm high sliding doors with white melamine shelf and hanging rail

### Linen

Corinthian 2040mm high hinged doors with four white melamine shelves

### Broom

Corinthian 2040mm high hinged doors with single white melamine shelf

## Construction Features

### Concrete Slab

Engineered standard 'M Class' concrete slab

### Framing

Timber

### Roof Trusses

To manufacturer's specification

## General

Building Permit Application

Construction Risk Insurance

Home Owners Warranty Insurance (Optional in Tasmania)

Engineers Soil Report

Termite treatment (region specific)

6-Star Energy Assessment

1800 677 156  
HOTONDO.COM.AU



**Hotondo  
Homes**

HOTONDO HOMES

FOREVER  
**RETREAT**

*Forever, part of your journey.*